



Alltest Instruments, Inc.

500 Central Ave.
Farmingdale, NJ 07727

P: (732) 919-3339
F: (732) 919-3332

alltestchambers.net
sales@alltest.net

Alltest Instruments is your one stop shop for environmental test solutions. We specialize in premium refurbished chamber sales, rentals, service, calibration, and controller upgrades.

Why buy from Alltest?

QUALITY YOU CAN TRUST

All chambers include a 90 day warranty and 5 day right of return. Each unit is tested to OEM specification and comes with our personal satisfaction guarantee.

TOP OF THE LINE EQUIPMENT

Alltest is the largest supplier of Thermotron environmental testing chambers.

EXPERT SERVICE WITH A PERSONAL TOUCH

Alltest Instruments technicians have over 30 years of experience with environmental design and chamber repair.

CUSTOM DESIGN SOLUTIONS

Our team is available to come on-site to help you design and install the right system for your specific needs.

Get a quote today!

Call (732) 919-3339

Email sales@alltest.net

Visit alltestchambers.net/contact

Return Policy: All items on this site carry a 5 day right of refusal, 90 day warranty and a 30 day resellers guarantee.

Product Availability: If an item you ordered has to be put on backorder, we will contact you immediately, and give you an estimated delivery date. When it becomes available, we will contact you before shipping to confirm that you still need the product. In the event we are unable to fulfill the order we will offer you a substitute or cancel the order. We reserve the right to cancel any order placed at any time. Price and delivery are subject to availability.

Shipping Cost: Buyer pays actual shipping cost of UPS or FedEx. No handling charges.

Sales Tax: Only New Jersey residents and companies pay sales tax. Unless you have a tax resale number.

Payment Terms For US Customers: Visa, MasterCard, AMEX, Wire Transfer, Prepay, PayPal, or COD. Repeat customers can request terms.

ALTITUDE TEST CHAMBERS

Thermotron's Altitude Test Chambers can test products at varying temperatures and altitudes up to 100,000 feet. The humidity option can be added to precisely simulate real-life conditions. Standard safety features include a cam action lock, internal pressure liner, and interlocked heaters. Altitude Chambers are ideal for military, aerospace, automotive, electronics, and other industrial applications.

Features

- Altitude Range up to 100,000 ft (30.5 km; 8 torr)
- Standard* Range of Sizes: 4 to 96 ft³ (113 to 2,718 Liters)
- Temperature Range: -73°C to 177°C (-100°F to 350°F)
- 8800 Controller
- Worldwide Service and Support

Options

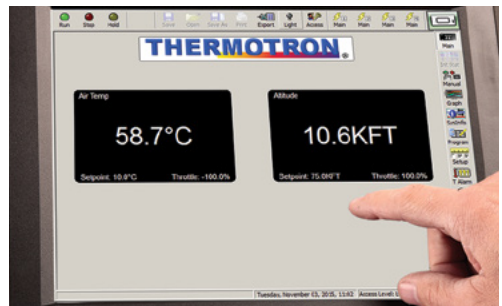
- Extended Altitude Range up to 150,000 ft (45.7 km; 1 torr)
- Humidity System (range from 20% to 95% RH)
- Humidity Water Purification System
- Remote Air-Cooled Condenser
- Heat-Tempered, Multi-Pane Window with Bars
- Interior Light
- Shelves
- Access Ports
- Casters
- Refrigeration Quiet Package
- Electrical Disconnect Switch
- Chart Recorder
- GPIB (IEEE-488™)
- CE and CSA Compliant
- Positive Pressure
- External Pressure Member



8800 CONTROLLER

Thermotron's exclusive Windows®-based 8800 Controller, with 12" color touchscreen, makes chamber operation and data collection easy and reliable. Quick navigation buttons provide shortcuts to user-selected screens. The 8800 Controller is standard on all Altitude Chambers. With this Controller, receive:

- Multi-level, password-based security system to protect data.
- Test data can be downloaded to spreadsheet formats.
- An Activity Log: record and retain 15+ years of chamber history.
- Product Temperature Control to improve product change rates by over-compensating the air temperature to control the product temperature.
- The System Monitor to detect excessive refrigeration pressures and temperatures and notify users when problems occur.



**Custom Altitude Chambers are available, including custom Altitude Walk-in Chambers. Talk with your local sales rep for more information.*

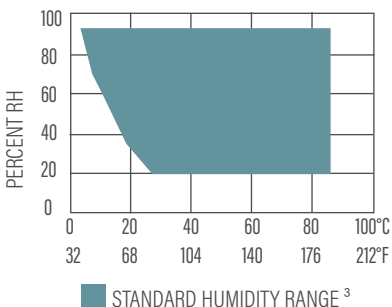
GENERAL SPECIFICATIONS

Model	Interior Dimensions W x D x H	Exterior Dimensions W x D x H	Workspace Volume	Approx. Shipping Weight
Temperature-Only				
FA-4-CH-1-1	20 x 20 x 20 in / 51 x 51 x 51 cm	32 x 34 x 82 in / 81 x 86 x 208 cm	4 ft ³ / 131 L	1,500 lbs / 680 kg
FA-10-CH-3-3	24 x 24 x 32 in / 61 x 61 x 81 cm	48 x 60 x 91 in / 122 x 152 x 231 cm	10 ft ³ / 302 L	2,500 lbs / 1,134 kg
FA-10-CH-5-5	24 x 24 x 32 in / 61 x 61 x 81 cm	48 x 60 x 91 in / 122 x 152 x 231 cm	10 ft ³ / 302 L	3,000 lbs / 1,361 kg
FA-16-CH-3-3	24 x 38 x 32 in / 61 x 97 x 81 cm	48 x 74 x 91 in / 122 x 188 x 231 cm	16 ft ³ / 478 L	3,500 lbs / 1,587 kg
FA-16-CH-5-5	24 x 38 x 32 in / 61 x 97 x 81 cm	48 x 74 x 91 in / 122 x 188 x 231 cm	16 ft ³ / 478 L	4,000 lbs / 1,814 kg
FA-35-CH-5-5	38 x 38 x 42 in / 97 x 97 x 107 cm	64 x 79 x 108 in / 163 x 201 x 274 cm	35 ft ³ / 994 L	5,500 lbs / 2,494 kg
FA-35-CH-7.5-7.5	38 x 38 x 42 in / 97 x 97 x 107 cm	64 x 79 x 108 in / 163 x 201 x 274 cm	35 ft ³ / 994 L	6,000 lbs / 2,721 kg
FA-46-CH-7.5-7.5	38 x 50 x 42 in / 97 x 127 x 107 cm	64 x 91 x 108 in / 162 x 231 x 274 cm	46 ft ³ / 1,307 L	7,000 lbs / 3,175 kg
FA-64-CH-7.5-7.5	48 x 48 x 48 in / 122 x 122 x 122 cm	75 x 93 x 110 in / 191 x 236 x 279 cm	64 ft ³ / 1,812 L	8,500 lbs / 3,856 kg
FA-64-CH-15-15	48 x 48 x 48 in / 122 x 122 x 122 cm	75 x 93 x 110 in / 191 x 236 x 279 cm	64 ft ³ / 1,812 L	9,000 lbs / 4,082 kg
FA-96-CH-7.5-7.5	48 x 72 x 48 in / 122 x 183 x 122 cm	75 x 117 x 110 in / 191 x 297 x 279 cm	96 ft ³ / 2,718 L	9,500 lbs / 4,308 kg
FA-96-CH-15-15	48 x 72 x 48 in / 122 x 183 x 122 cm	75 x 117 x 110 in / 191 x 297 x 279 cm	96 ft ³ / 2,718 L	10,000 lbs / 4,533 kg
Temperature-Humidity				
FA-10-CHM-3-3	24 x 24 x 32 in / 61 x 61 x 81 cm	48 x 60 x 91 in / 122 x 152 x 231 cm	10 ft ³ / 302 L	2,500 lbs / 1,134 kg
FA-10-CHM-5-5	24 x 24 x 32 in / 61 x 61 x 81 cm	48 x 60 x 91 in / 122 x 152 x 231 cm	10 ft ³ / 302 L	3,000 lbs / 1,361 kg
FA-16-CHM-3-3	24 x 38 x 32 in / 61 x 97 x 81 cm	48 x 74 x 91 in / 122 x 188 x 231 cm	16 ft ³ / 478 L	3,500 lbs / 1,587 kg
FA-16-CHM-5-5	24 x 38 x 32 in / 61 x 97 x 81 cm	48 x 74 x 91 in / 122 x 188 x 231 cm	16 ft ³ / 478 L	4,000 lbs / 1,814 kg
FA-35-CHM-5-5	38 x 38 x 42 in / 97 x 97 x 107 cm	64 x 79 x 108 in / 163 x 201 x 274 cm	35 ft ³ / 994 L	5,500 lbs / 2,494 kg
FA-35-CHM-7.5-7.5	38 x 38 x 42 in / 97 x 97 x 107 cm	64 x 79 x 108 in / 163 x 201 x 274 cm	35 ft ³ / 994 L	6,000 lbs / 2,721 kg
FA-46-CHM-7.5-7.5	38 x 50 x 42 in / 97 x 97 x 107 cm	64 x 91 x 108 in / 162 x 231 x 274 cm	46 ft ³ / 1,307 L	7,000 lbs / 3,175 kg
FA-64-CHM-7.5-7.5	48 x 48 x 48 in / 122 x 122 x 122 cm	75 x 93 x 110 in / 191 x 236 x 279 cm	64 ft ³ / 1,812 L	8,500 lbs / 3,856 kg
FA-64-CHM-15-15	48 x 48 x 48 in / 122 x 122 x 122 cm	75 x 93 x 110 in / 191 x 236 x 279 cm	64 ft ³ / 1,812 L	9,000 lbs / 4,082 kg
FA-96-CHM-7.5-7.5	48 x 72 x 48 in / 122 x 183 x 122 cm	75 x 117 x 110 in / 191 x 297 x 279 cm	96 ft ³ / 2,718 L	9,500 lbs / 4,308 kg
FA-96-CHM-15-15	48 x 72 x 48 in / 122 x 183 x 122 cm	75 x 117 x 110 in / 191 x 297 x 279 cm	96 ft ³ / 2,718 L	10,000 lbs / 4,535 kg

The two numbers at the end of the model number signify the horsepower of the chamber's compressors.

Dimensions may vary with the selection of certain options. General specifications subject to change without notice.

Humidity Range* (Optional)



Humidity Range ¹	20% to 95% RH
Dry Bulb Temperature Range	4.4°C to 85°C (40°F to 185°F)
Dew Point Temperature Range	4.4°C to 84°C (40°F to 183°F)
Humidity Control ²	±5% RH

*Relative humidity indication at or near the physical limits may be affected by sensor accuracy and control tolerance

¹ Limited by a 4.4°C (40°F) minimum dew point temperature and a maximum dry bulb temperature of 85°C (185°F)

² At a dry bulb temperature above 20°C (68°F)

³ Humidity Testing at Site Level