



Alltest Instruments, Inc.

500 Central Ave.
Farmingdale, NJ 07727

P: (732) 919-3339
F: (732) 919-3332

alltestchambers.net
sales@alltest.net

Alltest Instruments is your one stop shop for environmental test solutions. We specialize in premium refurbished chamber sales, rentals, service, calibration, and controller upgrades.

Why buy from Alltest?

QUALITY YOU CAN TRUST

All chambers include a 90 day warranty and 5 day right of return. Each unit is tested to OEM specification and comes with our personal satisfaction guarantee.

TOP OF THE LINE EQUIPMENT

Alltest is the largest supplier of Thermotron environmental testing chambers.

EXPERT SERVICE WITH A PERSONAL TOUCH

Alltest Instruments technicians have over 30 years of experience with environmental design and chamber repair.

CUSTOM DESIGN SOLUTIONS

Our team is available to come on-site to help you design and install the right system for your specific needs.

Get a quote today!

Call (732) 919-3339

Email sales@alltest.net

Visit alltestchambers.net/contact

Return Policy: All items on this site carry a 5 day right of refusal, 90 day warranty and a 30 day resellers guarantee.

Product Availability: If an item you ordered has to be put on backorder, we will contact you immediately, and give you an estimated delivery date. When it becomes available, we will contact you before shipping to confirm that you still need the product. In the event we are unable to fulfill the order we will offer you a substitute or cancel the order. We reserve the right to cancel any order placed at any time. Price and delivery are subject to availability.

Shipping Cost: Buyer pays actual shipping cost of UPS or FedEx. No handling charges.

Sales Tax: Only New Jersey residents and companies pay sales tax. Unless you have a tax resale number.

Payment Terms For US Customers: Visa, MasterCard, AMEX, Wire Transfer, Prepay, PayPal, or COD. Repeat customers can request terms.

S/SM-SERIES ENVIRONMENTAL TEST CHAMBERS



Thermotron's S-Series Environmental Test Chambers deliver the quality and accuracy you expect from a premier worldwide environmental test equipment manufacturer. Featuring the 8200+ Controller, wide temperature and humidity ranges, and multiple chamber sizes and performance configurations, Thermotron's S-Series Environmental Test Chamber is the ideal choice for quality and customizable simulated environmental testing.

S-Series Environmental Test Chambers are designed in multiple sizes, ranging from 4–32 cubic feet, and performance configurations. Both temperature only (S models) and temperature humidity (SM models) chambers utilize hermetically sealed compressors that provide moderate temperature change rates while consuming less power than comparable test chambers. Advanced features, such as an Electronic Humidity Sensor and Product Temperature Control, add value, increase efficiency, and reduce test chamber maintenance.

FEATURES

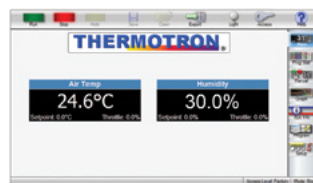


Additional Chamber Options*

- Additional Access Ports
- Additional Shelving
- Auxiliary Event Relay Board
- Cable Notch
- CE and CSA Compliant
- Chart Recorders
- Custom Shape, Size, and Placement of Access Ports
- Dry Air or Nitrogen Purge
- Extra Heat
- Glove Ports
- GPIB or RS-232/485 Computer Interface
- Humidity Water Purification and Recirculation System
- Inner Glass Doors
- LN₂ or CO₂ Boost
- Low Humidity Package
- Minimal Spark
- Single-Stage and Larger Compressor Systems
- ThermAlarm™
- ThermoTrak II™
- Water-Cooling

8200+ Controller

S-Series Environmental Test Chambers feature the robust and intuitive 8200+ Controller. The controller's software and hardware are designed by Thermotron engineers, specifically for programming and controlling environmental chambers. Operation and data collection are easy with a 7-inch color touchscreen display and familiar Windows® look and feel. Test data can be exported securely, quickly, and easily with a USB port. Built-in ethernet capabilities give the 8200+ Controller network-wide accessibility.



Worldwide Service and Support

Thermotron's comprehensive service department supports your equipment purchase for years after the sale. Our worldwide service professionals are available and ready to help over the phone or in person.

Technical advisors are available to answer questions and offer advice regarding start-up, service, operation, troubleshooting, and repair of your equipment.

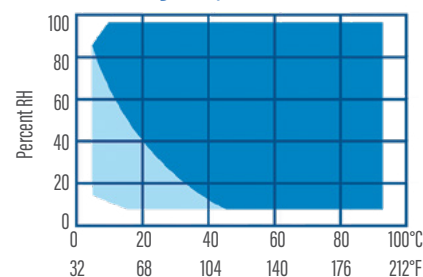
Factory-trained Field Service Engineers are located across the United States and throughout the world to assist with equipment start-up, after-delivery service, preventive maintenance, and calibration contracts. From phone support to overnight parts delivery, Thermotron can support you for the life of your equipment.

*Specifications subject to change. The addition of accessories may affect performance. Certain options may increase move-in dimensions.

GENERAL SPECIFICATION S/SM Cascade Systems

Temperature Range	Temperature Only (S Models)					-70°C to 180°C (-94°F to 356°F)						
	Temperature and Humidity* (SM Models)					-68°C to 180°C (-90°F to 356°F)						
Model	S-4	S-8	SM-8	S-16	SM-16	S-27	SM-27	S-32	SM-32			
Compressor Sizes	1-1					2-2			2-3	2-2	2-3	
Workspace Dimensions — W x D x H												
Inches	20 x 20 x 20		24 x 24 x 24		30 x 30 x 30		36 x 36 x 36		38 x 38 x 38			
Centimeters	51 x 51 x 51		61 x 61 x 61		76 x 76 x 76		91 x 91 x 91		97 x 97 x 97			
Exterior Dimensions — W x D x H												
Inches	31 x 42 x 68		35 x 49 x 73		45 x 59 x 81		51 x 65 x 88		53 x 68 x 90			
Centimeters	79 x 107 x 173		89 x 124 x 185		114 x 150 x 206		130 x 165 x 224		135 x 173 x 229			
Volume												
Cubic Feet	4		8		16		27		32			
Liters	113		227		453		764		906			
Temperature Control Tolerance	±0.3°C (±0.5°F)											
Temperature Uniformity**	±0.7°C (±1.3°F)											
Shipping Weight (Approx.)												
Pounds	700	800	875	1,320	1,395	1,800	1,875	1,975	2,050			
Kilograms	318	363	397	599	633	816	851	896	930			
Cooling Change Rates — Minutes												
180°C to -65°C (356°F to -85°F)	50	66	72	68	80	85	98	93	68	106	74	
71°C to -65°C (160°F to -85°F)	30	44	54	50	54	58	64	65	48	71	51	
85°C to -40°C (185°F to -40°F)	14	26	32	28	31	39	42	45	21	48	23	
Heating Change Rates — Minutes												
-65°C to 180°C (-85°F to 356°F)	27	42	43	52	54	66	68	71	38	73	40	
-65°C to 71°C (-85°F to 160°F)	11	16	17	22	22	27	28	30	12	31	13	
-40°C to 85°C (-40°F to 185°F)	10	15	16	20	21	25	26	28	10	29	11	
Electrical Service — Full Load Amps												
208/1/60	30	29	29	50	50	50	50	50	—	50	—	
208/3/60	22	22	22	35	35	35	35	35	47	35	53	
230/1/60	30	30	30	49	49	49	49	49	—	49	—	
230/3/60	23	23	23	35	35	35	35	35	47	35	53	
460/3/60	—	—	—	15	17	15	17	15	24	17	27	
220/1/50	25	24	27	—	—	—	—	—	—	—	—	
400/3/50	12	11	11	17	21	17	21	17	24	21	24	
Live Load Capacity — Watts												
-18°C (0°F)	600	550			1,000			1,500			1,000	1,500
-40°C (-40°F)	400	350			700			1,050			700	1,050
-54°C (-65°F)	300	200			400			600			400	600
Noise Level ¹ — dBA												
Heating	60			60								
Cooling	68			70								

Humidity Specifications*



Humidity Range ¹	10% to 98% RH
Dry Bulb Temperature Range	7°C to 88°C (45°F to 190°F)
Dewpoint Temperature Range	7°C to 87°C (45°F to 188°F)
Humidity Control Tolerance ²	±2.5% RH

■ Standard Humidity Range

■ Optional Low Humidity Package

¹ Limited by a 7°C (45°F) minimum dewpoint temperature and a maximum dry bulb temperature of 88°C (190°F).

² At a dry bulb temperature above 20°C (68°F).

*Relative humidity indication at or near the physical limits may be affected by sensor accuracy and control tolerance. An optional humidity package can be added for applications requiring humidity levels lower than those covered by the full-range humidity system.

**Standard deviation from mean, measured at -25°C (-13°F) or at +100°C (212°F).

¹Noise Level: A-weighted sound pressure level measured at a distance of 1.0 meter (39.4 inches) from the surface of the equipment at a height of 1.6 meters (63 inches) from the floor in free-field conditions using a calibrated instrument.

Performance is based on 60Hz and 23.9°C (75°F) ambient air, and may vary slightly at other ambient temperatures. Chambers are designed for use under normal laboratory conditions. For other applications, please consult Thermotron.

Specifications subject to change without notice.

GENERAL SPECIFICATION

S/SM Single-Stage Systems

Temperature Range	Temperature Only (S Models)		-40°C to 180°C (-40°F to 356°F)	
	Temperature and Humidity* (SM Models)		-40°C to 180°C (-40°F to 356°F)	
Model	S-4S	SM-4S	S-8S	SM-8S
Compressor Sizes: Hp Single Stage	2-0			
Workspace Dimensions — W x D x H				
Inches	20 x 20 x 20		24 x 24 x 24	
Centimeters	51 x 51 x 51		61 x 61 x 61	
Exterior Dimensions — W x D x H				
Inches	31 x 42 x 68		35 x 49 x 73	
Centimeters	79 x 107 x 173		89 x 124 x 185	
Volume				
Cubic Feet	4		8	
Liters	113		227	
Temperature Control Tolerance	±0.3°C (±0.5°F)			
Temperature Uniformity**	±0.7°C (±1.3°F)			
Shipping Weight (Approx.)				
Pounds	700	775	800	875
Kilograms	318	350	363	397
Cooling Change Rates — °C / Minutes				
85°C to -20°C (185°F to -4°F)	14	14	20	20
180°C to -35°C (356°F to -31°F)	40	40	50	50
Heating Change Rates — °C / Minutes				
-20°C to 85°C (-4°F to 185°F)	8	8	13	13
-35°C to 180°C (-31°F to 356°F)	22	22	38	38
Electrical Service — Full Load Amps				
208/1/60	26	33	26	33
208/3/60	23	23	23	23
230/1/60	25	33	25	33
230/3/60	23	23	23	23
460/3/60	12	12	12	12
400/3/50	15	15	15	15
Noise Level† — dBA				
Heating			60	
Cooling			68	

*Relative humidity indication at or near the physical limits may be affected by sensor accuracy and control tolerance. An optional humidity package can be added for applications requiring humidity levels lower than those covered by the full-range humidity system.

**Standard deviation from mean, measured at -25°C (-13°F) or at +100°C (212°F).

†Noise Level: A-weighted sound pressure level measured at a distance of 1.0 meter (39.4 inches) from the surface of the equipment at a

height of 1.6 meters (63 inches) from the floor in free-field conditions using a calibrated instrument.

Performance is based on 60Hz and 23.9°C (75°F) ambient air, and may vary slightly at other ambient temperatures. Chambers are designed for use under normal laboratory conditions. For other applications, please consult Thermotron.

Specifications subject to change without notice.

For more than 55 years, Thermotron has provided quality environmental test equipment. We've worked to establish a trusted reputation among our peers, and when people hear the name *Thermotron*, they have confidence in the testing of their own product. We've been building our name since 1962; now it's your turn.

**QUALITY. TRUST.
CONFIDENCE.**

— BUILD YOURS WITH A —
THERMOTRON.

T H E R M O T R O N . C O M

US: 291 Kollen Park Drive, Holland, Michigan 49423 | P: (616) 393-4580 | F: (616) 392-5643 | info@thermotron.com

UK: Winch Rd., Kent Science Park, Sittingbourne, Kent, ME9 8EF England | P: 01795 436333 | F: 01795 436777 | sales@thermotron.co.uk